

2803/105  
CLOTHING CONSTRUCTION I  
PRACTICAL  
Oct/Nov. 2019  
Time: 6 hours



THE KENYA NATIONAL EXAMINATIONS COUNCIL

**DIPLOMA IN FASHION DESIGN AND CLOTHING TECHNOLOGY  
MODULE I**

**CLOTHING CONSTRUCTION I PRACTICAL**

**6 hours**

**INSTRUCTIONS TO CANDIDATES**

1. You should have the following items for this examination:
  - (i) plain light weight fabric  $1\frac{1}{4}$  metres long by 152 cm wide;
  - (ii) fusible interfacing 64 cm by 46 cm;
  - (iii) thread to match the fabric;
  - (iv) zip 10" long;
  - (v) brown papers;
  - (vi) sewing tools;
  - (vii) one large envelope.
  
2. At the end of the examination:
  - (a) stitch on a label bearing your name and index number on a single layer of fabric without concealing any details.
  - (b) enclose the garment in the large envelope provided.

**This paper consists of 2 printed pages.**

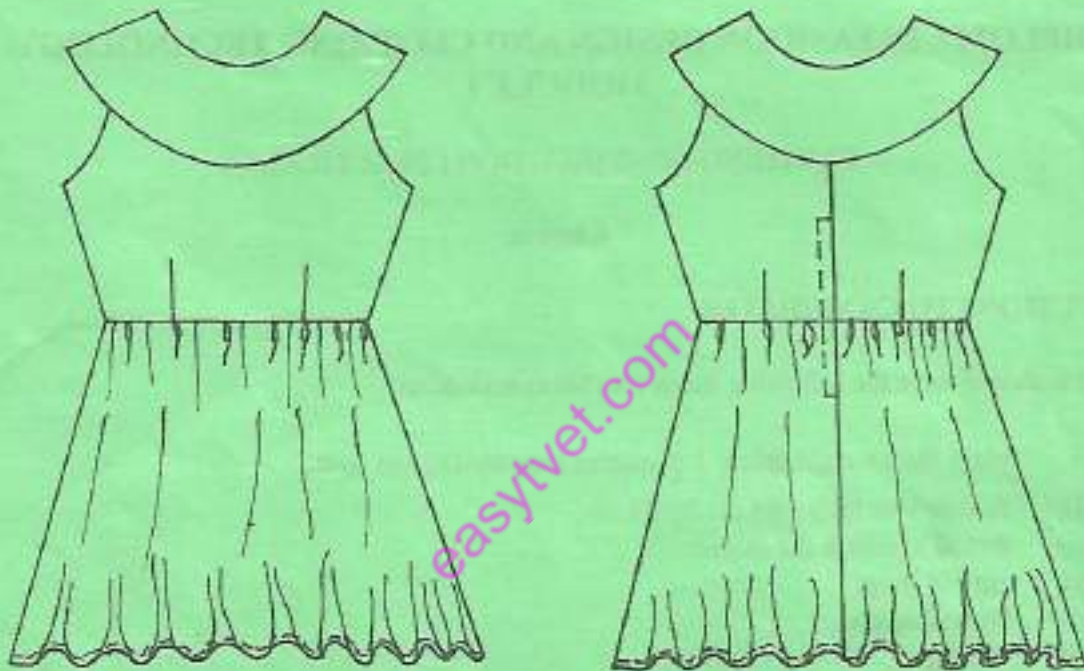
**Candidates should check the question paper to ascertain that both pages are printed as indicated and that no questions are missing.**

## TASKS

Using the measurements and the materials provided, cut out and make the garment style sketched below as follows:

- (i) use the plain closed seam at the shoulders and sides;
- (ii) understitch the armhole facings;
- (iii) finish the neckline with a crossway strip.

**NB:** collar has shoulder seams.



FRONT VIEW

BACK VIEW

### MEASUREMENTS

Bust	-	68 cm
Waist	-	61 cm
Shoulder	-	11 cm
Scye depth	-	17.4 cm
Nape to waist	-	32.5 cm
Full length	-	76 cm
Across back	-	29.6 cm

**THIS IS THE LAST PRINTED PAGE.**